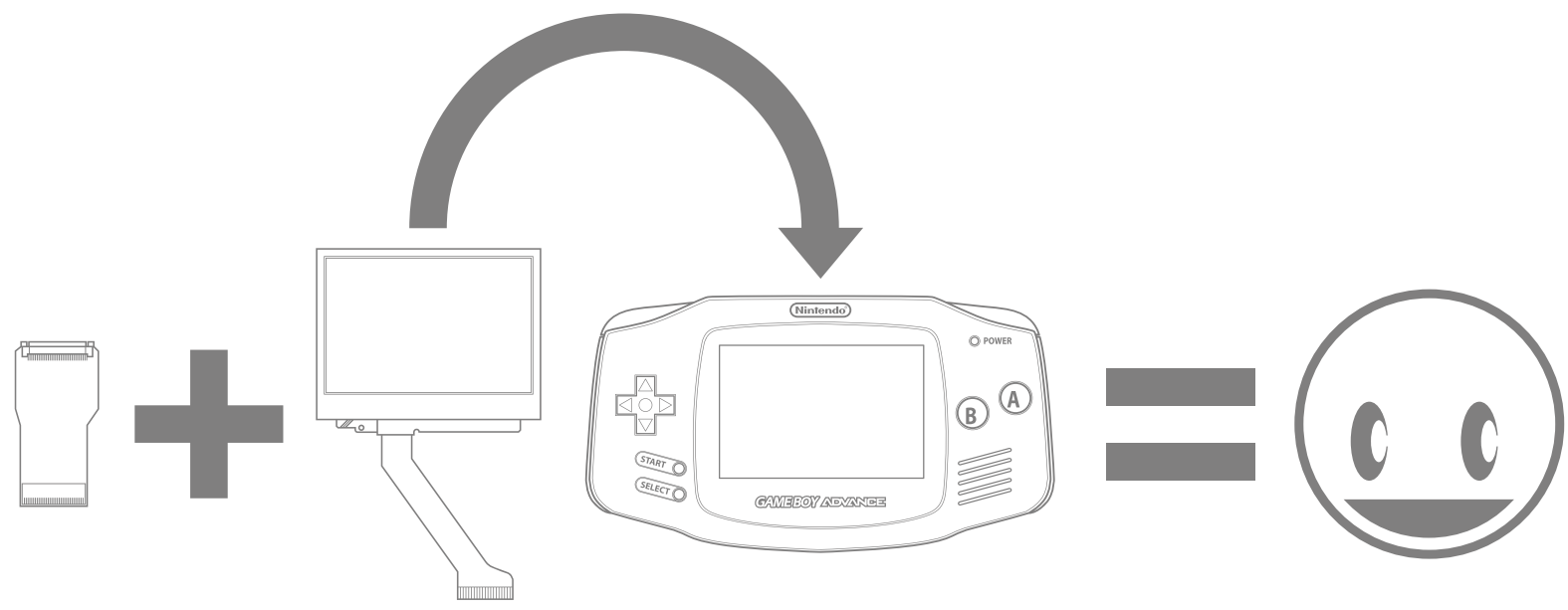
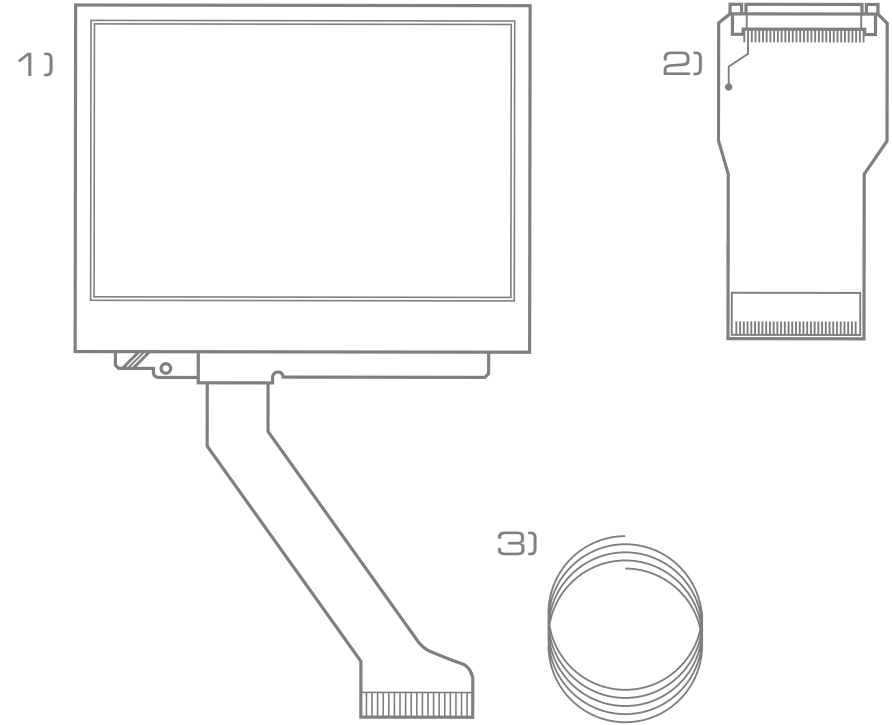
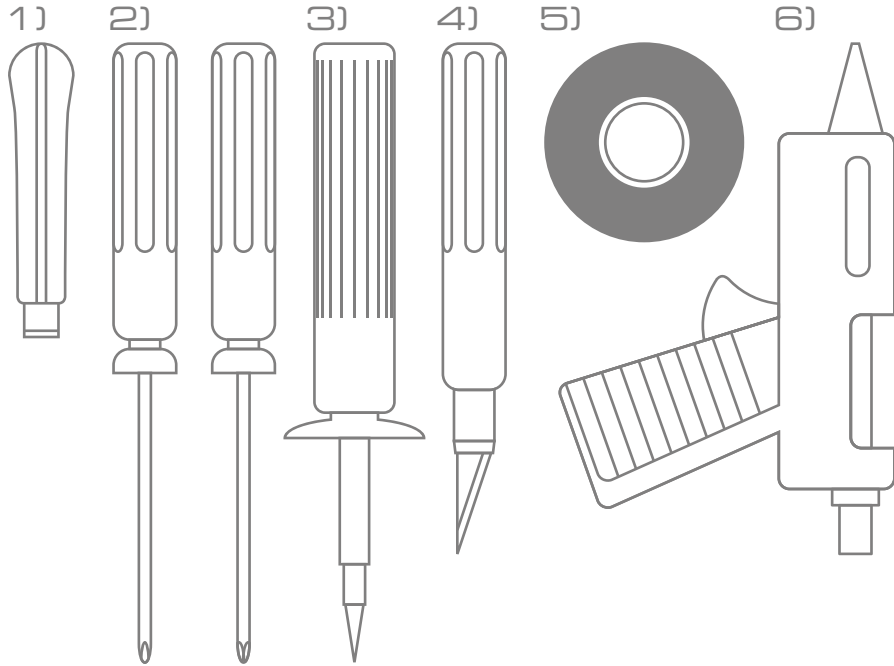


GAMEBOY ADVANCE LIGHT+ MODIFICATION KIT



Gameboy Advance AGS-101 screen installation and hardware modification instructions (covers both 32 and 40 pin models)

GAMEBOY ADVANCE LIGHT+ MODIFICATION KIT



Tools Required:

- 1) Plastic Pry Tool or Small Flat Screwdriver
- 2) Small Tri-Wing & Philips Screwdrivers
- 3) 15W-30W Soldering Iron & Solder
- 4) Hobby Knife or Rotary Tool
- 5) Electrical Tape
- 6) Hot Melt Glue

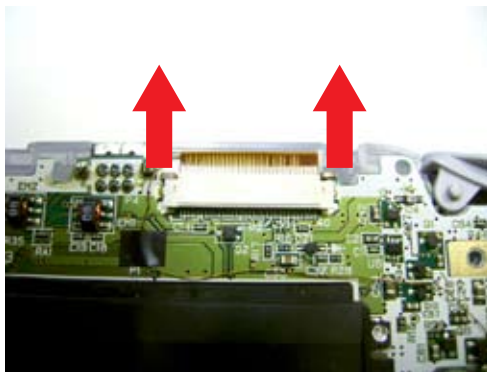
Kit Contents:

- 1) NEW LCD screen (AGS-101)
- 2) Adapter Ribbon Cable
(either 32 or 40-pin motherboard compatible)
- 3) Wire

GAME BOY ADVANCE LIGHT+ MODIFICATION KIT



1) Remove highlighted screws with the **Triwing** and **Philips** screwdrivers. Pull shell apart.



2) Slide the plastic lock toward top of unit using the tabs at each end, then pull ribbon cable from clip.



3) Remove highlighted Philips screws and remove the PCB.

* This 3rd screw is only present in some systems.

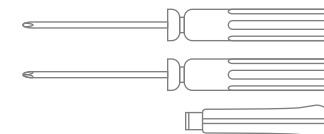


4) Remove LCD with a plastic pry tool or small flat head screwdriver, then pull away the sticky black border.



5) Gently push clear lens out with a soft towel/cloth and set aside in a clean area.

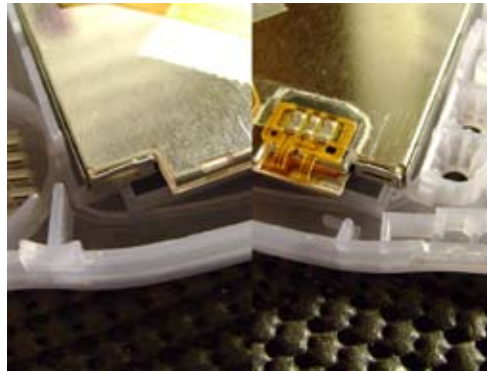
Tools & Parts Required:



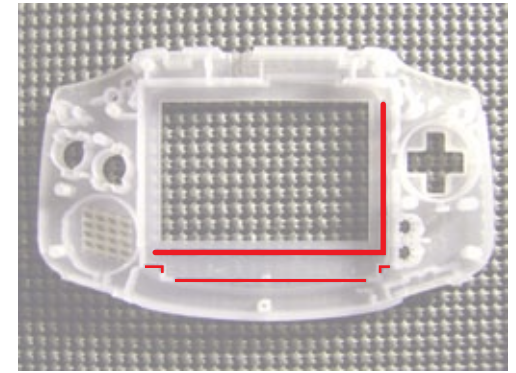
GAME BOY ADVANCE LIGHT+ MODIFICATION KIT



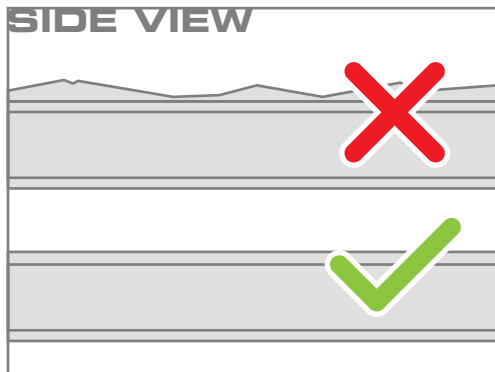
1) ⚠ There is a protective film on the LCD. Do **NOT** remove it yet! Place new LCD into shell as shown.



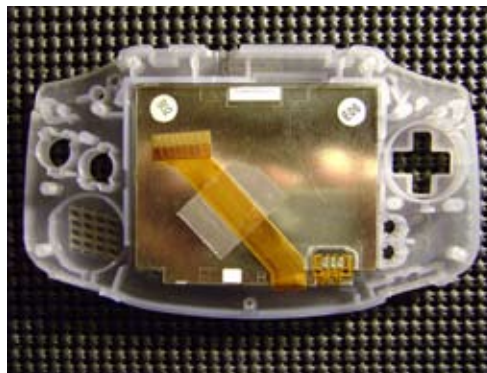
2) Take note of where the plastic shell keeps the new LCD from sitting flush with the surface below.



3) Indicate where the new LCD makes contact with the plastic housing with a magic marker (red areas).

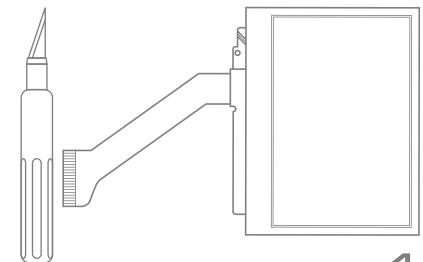


4) Using a hobby knife or rotary tool, completely remove any of the marked walls/tabs.

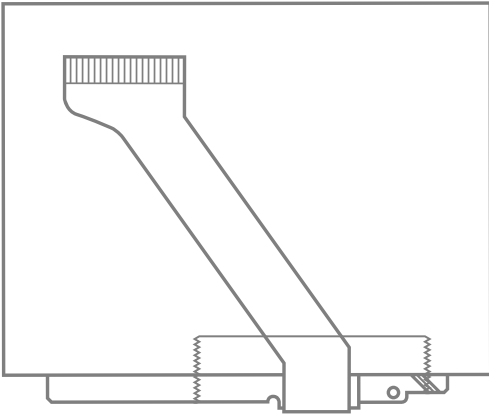


5) Place new LCD in the shell to test fit. Trim more plastic if needed until LCD sits flush.

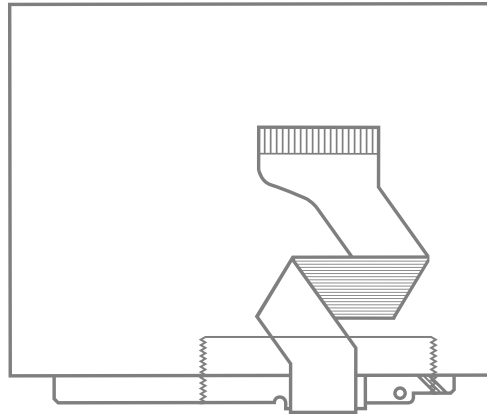
Tools & Parts Required:



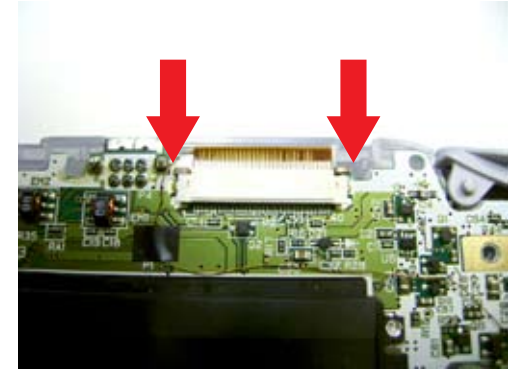
GAME BOY ADVANCE LIGHT+ MODIFICATION KIT



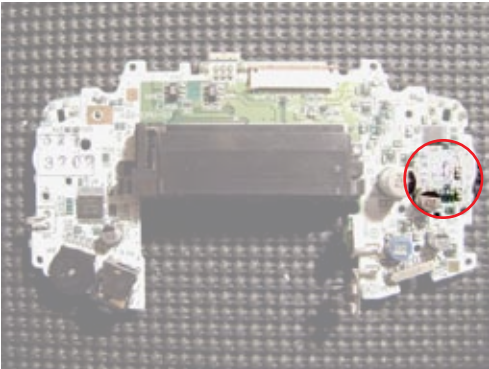
1) The LCD ribbon cable needs to be folded in order for the new parts to fit.



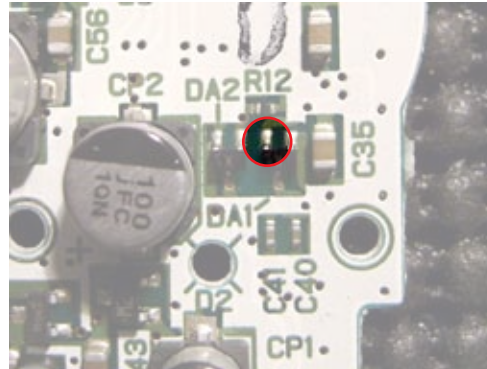
2) Fold the ribbon cable as into a "Z" as shown.



3) Attach adapter cable to PCB with the contacts facing up, then slide the locking clip back down using the tabs on either side.

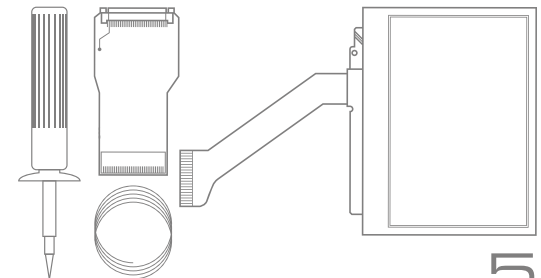


4) Locate this area on the back of the PCB.

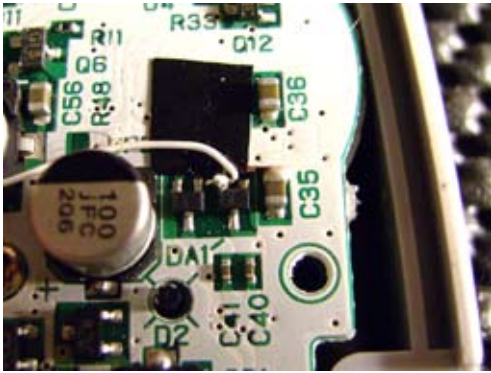


5) The left leg of "DA1" is where you will solder the wire which leads to the adapter.

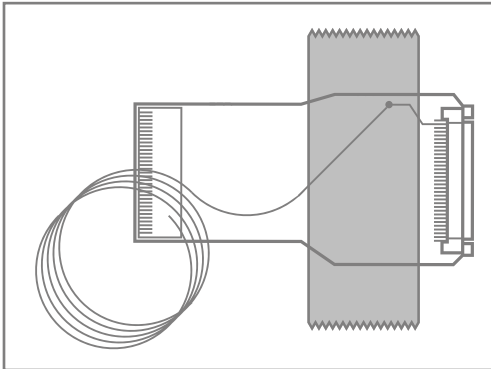
Tools & Parts Required:



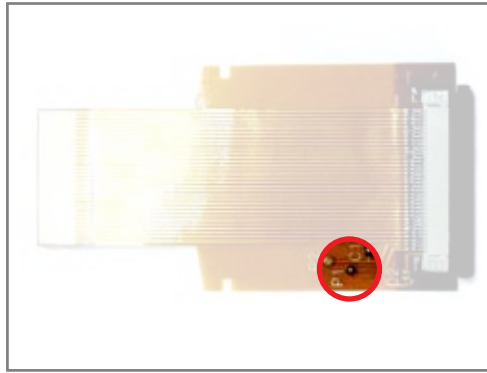
GAME BOY ADVANCE LIGHT+ MODIFICATION KIT



1) You may want to put a small piece of tape down to help prevent short circuits/solder bridges.



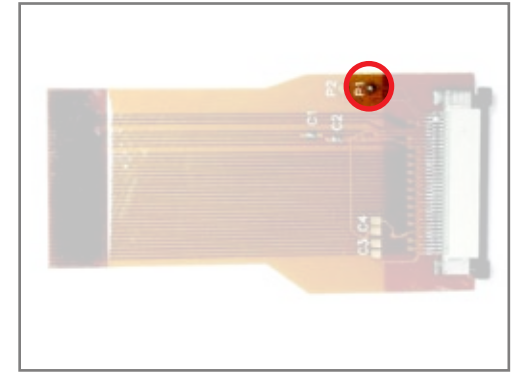
3) Tape the freshly soldered wire down to the adapter with some electrical tape.



2a) This is the **32-pin** adapter. Solder the other end of the wire to "P1", which is highlighted here.

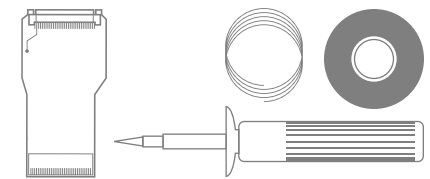


4) Test everything by connecting the adapter to the LCD and powering up the unit before moving on!

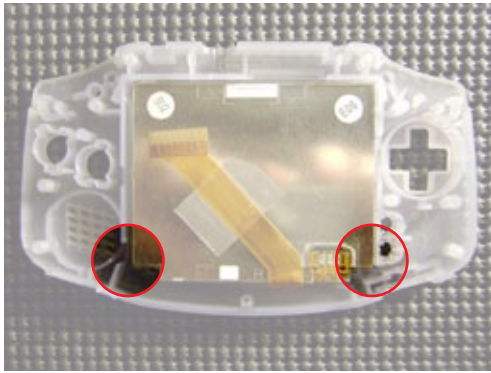


2b) This is the **40-pin** adapter. Solder the other end of the wire to "P1", which is highlighted here.

Tools & Parts Required:



GAME BOY ADVANCE LIGHT+ MODIFICATION KIT



1) A small amount of hot glue in the corners marked will help keep the LCD in place during reassembly.



2) You may need to slightly reposition the wire or the adapter during reassembly. Take your time and be careful.



3) Remove protective film from the LCD immediately before replacing the lens and ENJOY!

Tools & Parts Required:

